

# stage guide

## dani gurgel + 3

Dani Gurgel [vocals]  
Piano (or keyboards, if not available)  
Drums  
Acoustic and electric bass

Stage Map	2
Rider	3
Input List	4

Please refer to [www.danigurgel.com.br/nosso](http://www.danigurgel.com.br/nosso) to download the stage guide for Dani Gurgel sextet (Dani + 5), the band that recorded the album "Nosso" [Dani Gurgel (vocals), piano, drums, acoustic and electric bass, acoustic and electric guitar, percussion]

### Contact

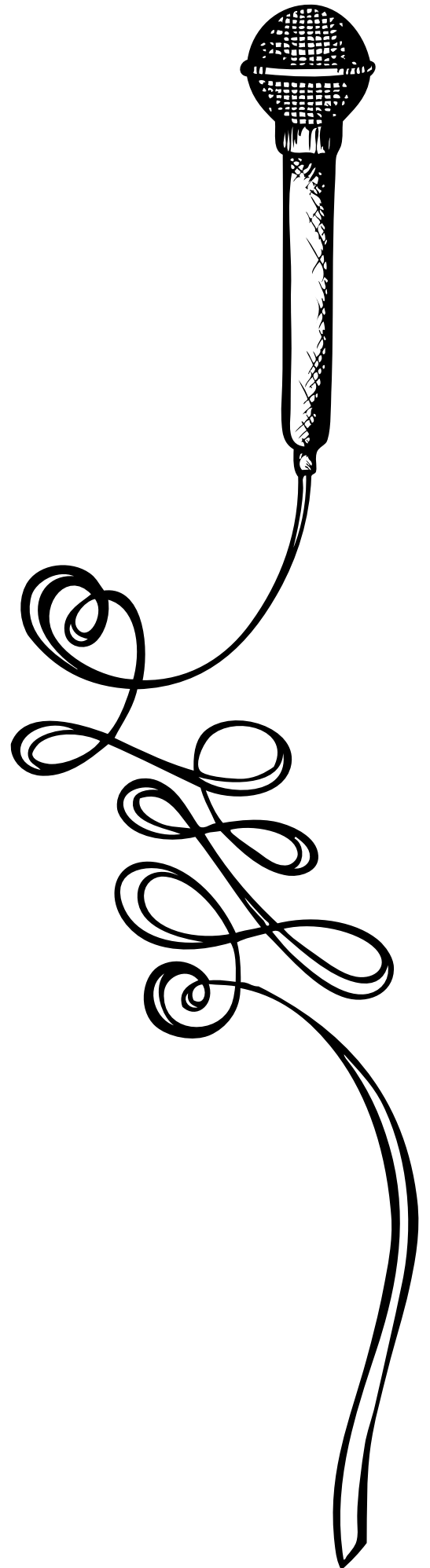
for production details, equipment and stage mounting

#### Dani Gurgel

+55 11 8224 3289 / +55 11 3032 1780  
[musica@danigurgel.com.br](mailto:musica@danigurgel.com.br)

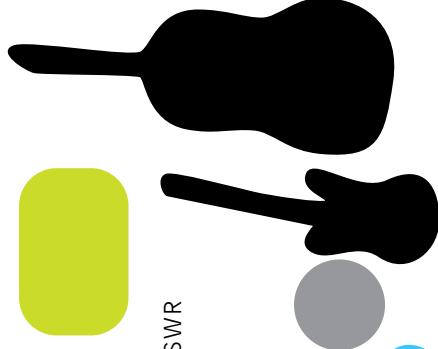
#### Thiago Rabello

+55 11 8369 4724  
[thiagobigrabello@gmail.com](mailto:thiagobigrabello@gmail.com)

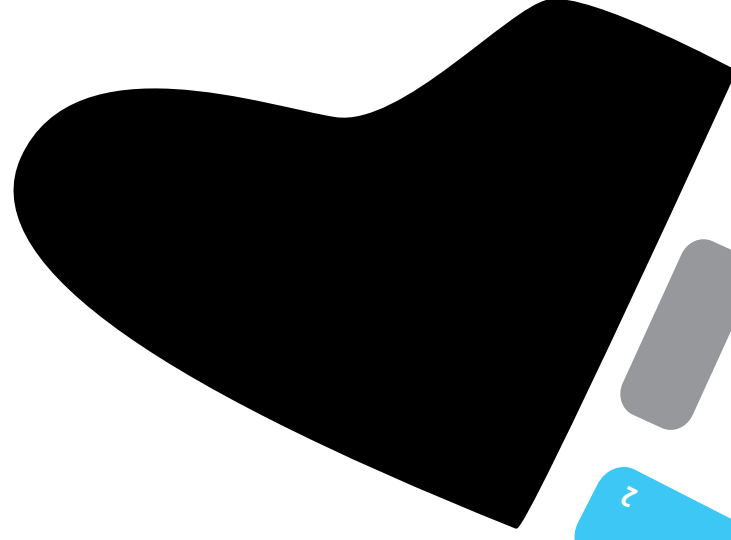


# dani + 3 | map

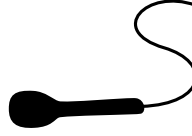
Baixo acústico e elétrico  
Acoustic and electric bass



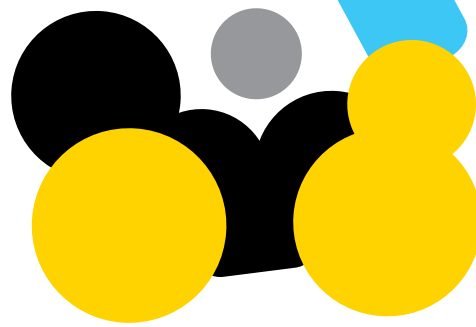
Amplificador de baixo  
Bass amp  
GK / Hartke / Ampeg / SWR



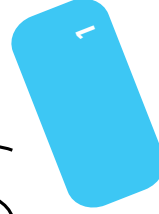
Piano ou Teclado  
Piano or keyboards



Dani Gurgel [voz | vocals]



Bateria Drums



distância máxima 5m - aproximar os músicos, caso a boca de cena seja maior  
max distance 5m (15ft) - put musicians closer, if the stage is too wide

# dani + 3 | rider

## P.A. & Monitor

### 1 console (for a single engineer)

Mixer 12, 16 or 24 channels, with 8 subgroups, 4 eq bands and, at least, 4 effect sends.

[Soundcraft, Midas, DDA, PM4000]

### Peripherals

02 Graphic Equalizers 1/3 octave, stereo [Klark Teknik, BSS].

02 4-way Crossovers [Omnidrive, Klark Teknik, BSS]

06 Compressor channels [Klark Teknik, BSS, DBX]

04 Gate channels [Klark Teknik, BSS, DBX, Drawmer, JBL]

03 Effect processor [SPX 990]

01 Spectre Analyser 1/3 - octave [Klark Teknik, Audio Control]

01 CD Player

P.A. room-compatible - average 102, peaks 113 dB spl – “C” Weighted, at the house mix.

Assemble P.A. 1m/3ft away from the stage front, 1m/3ft from the sides and 1,5m/5ft from the floor level.

The house-mix must be placed in front of and exactly in the middle of the two P.A. columns, between 10m/32ft and 20m/65ft from the stage.

### Monitor

04 Spots [EAW, Meyer, TurboSound ou Clair Bros]

02 Side fill systems, 4 active ways

### Back Line

01 Piano Yamaha/Steinway/Kawai tuned for 440Hz

01 Complete drum set: 1 Snare with stand, 1 Hi-Hat stand, 1 Bass drum pedal, 1 Floor tom, 1 Tom, 1 Surdo; 3 Cymbal stands; 2 Thrones

02 Simple thrones, height-adjustable

04 Sheet music stands

01 Guitar stand

### Amplifiers

01 Bass Amplifier [GK / Hartke / Ampeg / SWR]

A/C 110v – 60Hz

# dani + 3 | input list

Channel	Instrument	Mic	Stands	Insert P.A.	Insert Mon
1.	Bass drum	BETA 52	Shor	Comp/Gate	Comp/Gate
2.	Snare	SM-57/BETA 57	Medium		
3.	Over – L	SM81/AKG 414/C 3000	Tall		
4.	Over – R	SM81/AKG 414/C 3000	Tall		
5.	Electric bass	D.BOX	-		
6.	Acoustic bass	D.BOX	-		
7.	Piano L	AKG 414/C3000/SM81	Tall		
8.	Piano R (or keyboard LR D.Box)	AKG 414/C3000/SM81	Tall		
9.	Voice Dani Gurgel	Neumann KMS 105 (próprio)	Medium	Comp	
10.	Voice - Spare	SM58	Medium	Comp	

## Monitor

1	Center	01 caixa
2	Piano	01 caixa
3	Bass	01 caixa
4	Drums	01 caixa
5	Side L	
6	Side R	